



INFORMATION BULLETIN

**Issue No. 29
June 2016**



CONTENTS PAGE

Item	Page No.
RRF Update Report	3
Communications and Education Update Report	10
Documents Executed by affixing the Common Seal	26
Letter from the Disability Services regarding the MRC amended Disability Access and Inclusion Plan	27

RESOURCE RECOVERY FACILITY UPDATE REPORT	
File No:	WST/13-05
Attachment/s:	Nil
Date:	23 June 2016
Prepared by:	Director Corporate Services

This report presents a summary of activities that have taken place in the reporting period covering 1 April 2016 to 23 June 2016.

ONGOING MATTERS

Composter Replacement

The new composters have been successfully installed at the Resource Recovery Facility (RRF) and have been recommissioned into production.

Based on year to date results and the forecast delivery schedule, it is anticipated that 75,800 tonnes will be processed by the RRF this financial year. This is expected to return to 100,000 tonnes for the 2016/17 financial year.

No Glass Campaign

During the last quarter of 2015, the Mindarie Regional Council (MRC) rolled out a 'No Glass in the green top bin' campaign, aimed specifically at reducing the amount of glass being diverted to the RRF.

The campaign was rolled out to four councils who are the primary suppliers of waste to the RRF. While the final results from the RRF regarding any reduction of glass in the final product and reduction of the glass fraction being returned to landfill are still pending, indicative tests are showing that the program has been successful in reducing the amount of glass in the RRF feedstock.

OPERATIONAL INFORMATION

Waste Delivery

Waste Delivery Summary for Reporting Period

MONTH	SCHEDULED TONNES	DELIVERED TONNES	DIFFERENCE TONNES
March 2016	9,200	7,713	(1,487)
April 2016	8,400	8,938	538
May 2016	8,880	9,549	669

For the 7th Contract Year, for the period to 31 May 2016, the RRF was 24,245 tonnes behind schedule as a result of the planned shutdown for the replacement of the composters in late 2015.

With the exception of the shutdown for the composter replacement, the RRF is operating as anticipated in the Resource Recovery Facility Agreement (RRFA), with average availability of 73% over the past 12 months.

On a monthly basis, Additional Tonnes (those tonnes greater than the monthly scheduled tonnes) only incur the Variable Operating Cost charge, but not the Capital Cost or Fixed Operating Cost charges.

Unavailable Tonnes (those tonnes less than the monthly scheduled tonnes) are not paid for unless:

- Within the Contract Year there is a positive balance of Additional Tonnes, these Additional Tonnes can be off-set against the Unavailable Tonnes. In this case, the off-set Additional Tonnes incur the full gate fee cost less the Variable Operating Cost (which has already been paid on the Additional Tonnes); or
- If the RRF Availability for a month is less than 92% of the monthly Scheduled Tonnes and there are no accumulated Additional Tonnes remaining to be off-set, then the MRC is required to pay the Capital Cost on all Unavailable Tonnes up to 92% of the monthly Scheduled Tonnes.

At the end of the Contract Year, if 100,000 tonnes of waste have been delivered to the RRF then the above “overs and unders” system should balance out.

The exception to the above is the tonnes not processed during the composter replacement. The MRC entered into a standstill deed with BioVision which deals with the operations of the plant during this period. The tonnes scheduled for processing but not processed during the shutdown have been recorded as Accrued Tonnes. The MRC has already paid the capital cost component of the RRF Gate Fee in relation to these tonnes and so the Accrued Tonnes will be processed for the MRC at the end of the RRFA contract with the MRC only have to pay the fixed and variable components of the RRF Gate Fee.

Waste Diversion

Waste Diversion for the past six months (December 2015 to May 2016) has improved dramatically to 52.7% with a Waste Diversion Target of 51.3%.

Operational Activities

During March 2016, there was a planned one week shutdown primarily so that the inside of the composters could be inspected. Various testing was carried out and the composter shells have been confirmed as performing as expected.

Community Complaints

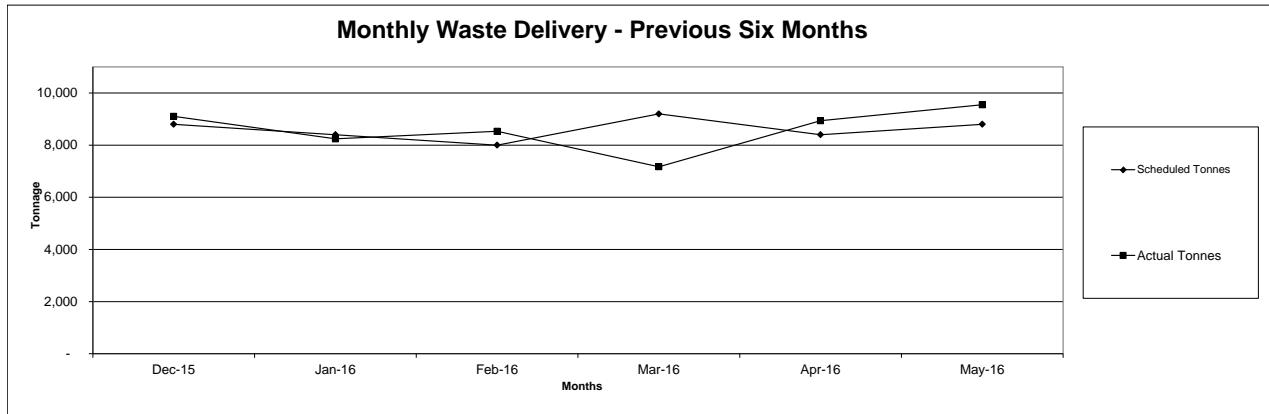
BioVision last met with its community stakeholder group on 30 November 2015 and no serious issues were raised.

COMMUNITY COMPLAINTS SUMMARY FOR THE REPORTING PERIOD

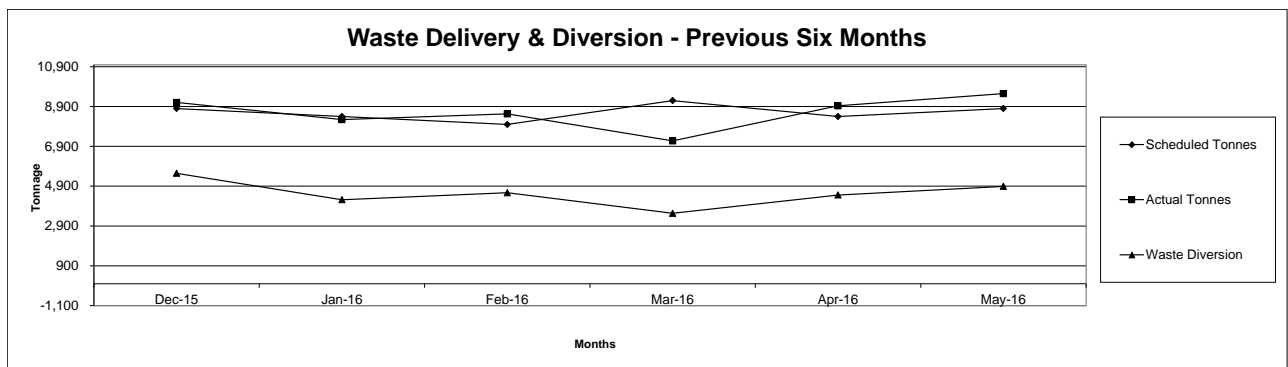
Date	Complaint	From	Outcome
Nil	No complaints have been received	Nil	Nil

The graphs below provide data up to **31 May 2016**.

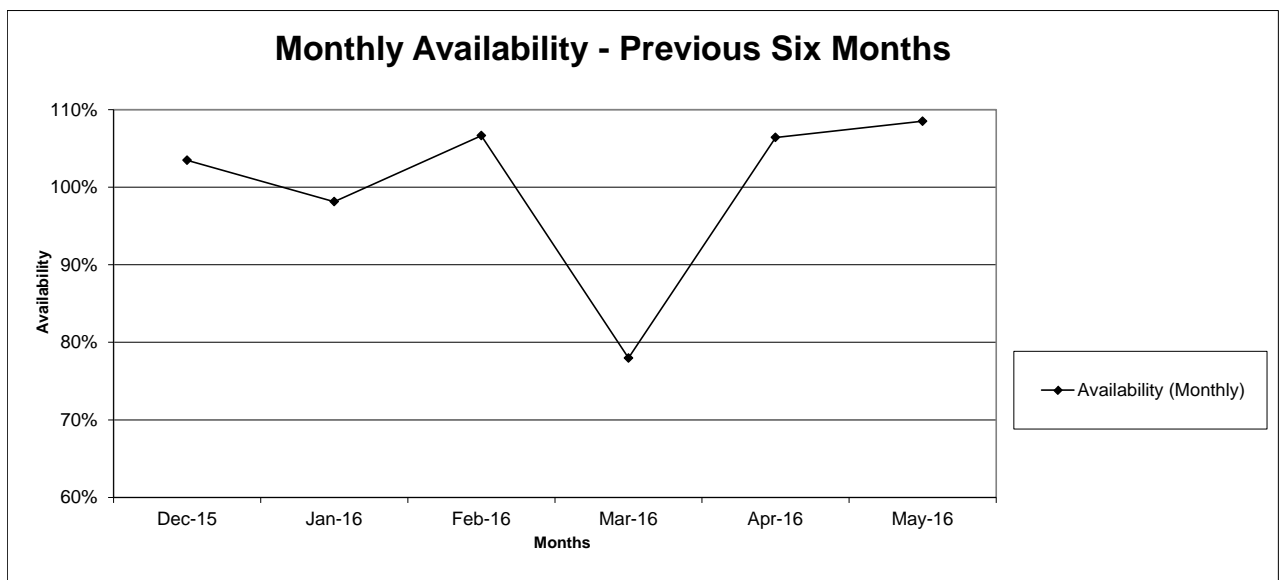
Graph No. 1 – Monthly Waste Delivery – Previous Six Months

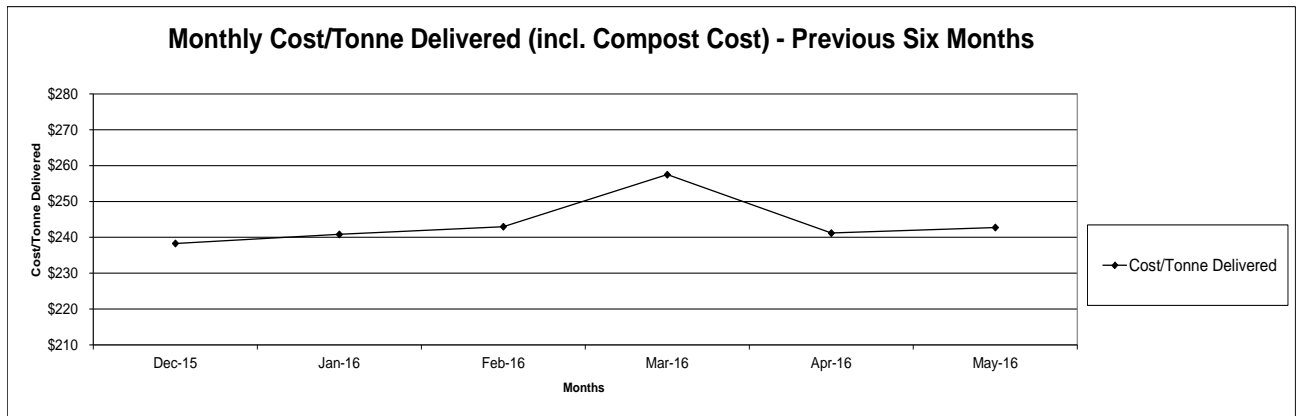
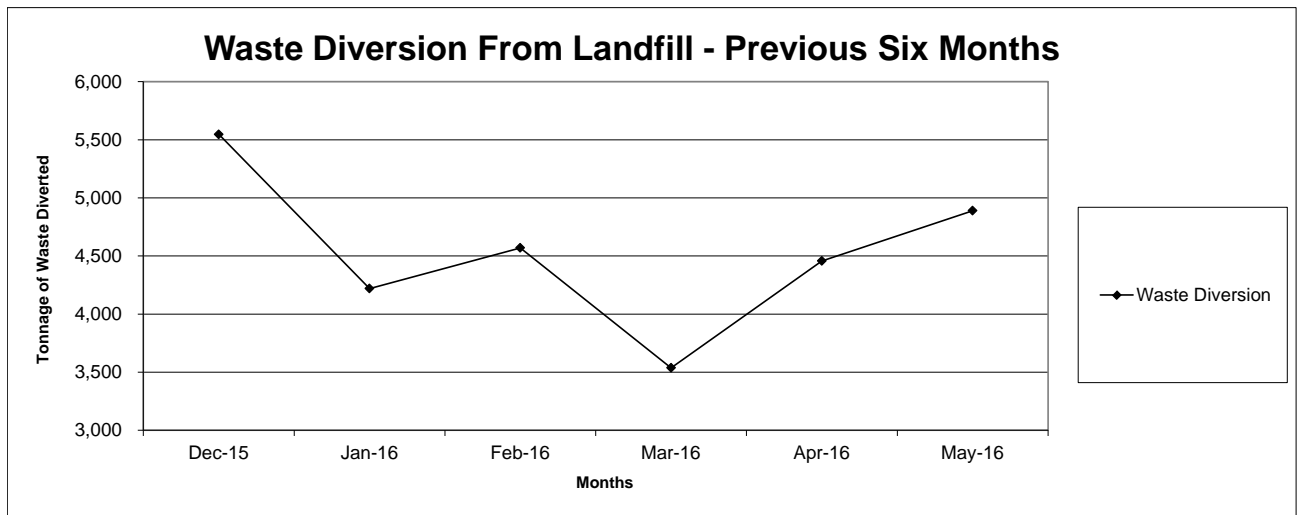


Graph No. 2 – Waste Delivery & Diversion – Previous Six Months



Graph No. 3 – Monthly Availability – Previous Six Months



Graph No. 4 – Monthly Cost/tonne Delivered (incl. Compost Cost) – Previous Six Months**Graph No. 5 – Waste Diversion from Landfill – Previous Six Months**

Performance Indicators

KPI's as per the RRFA are as follows:

Table No. 1 – KPI Summary (to 31 May 2016)

KPI	Target	Previous 6 Months	Mar	Apr	May
Availability*	95%	100%	78%	106%	109%
Environmental Standard - Number of Breaches	0	0	0	0	0
Waste Diversion	51.3%	52.7%	50.7%	50.1%	48.8%
Quality of Compost - Number of Breaches**	0	1 (Jan)	0	0	0
Quantity of Recyclable Packaging ***	0.80%	n/a	0.98%	1.08%	1.01%
Health and Safety - Number of LTI's	0	0	0	0	0
Community Acceptance - Number of Complaints ****	0	0	0	0	0
Project Culture - PAG Chairperson Score	100	100	100	100	100

* The Target Availability during the Initial Operating Period is to achieve an Availability of greater than 95% over a six-month period.

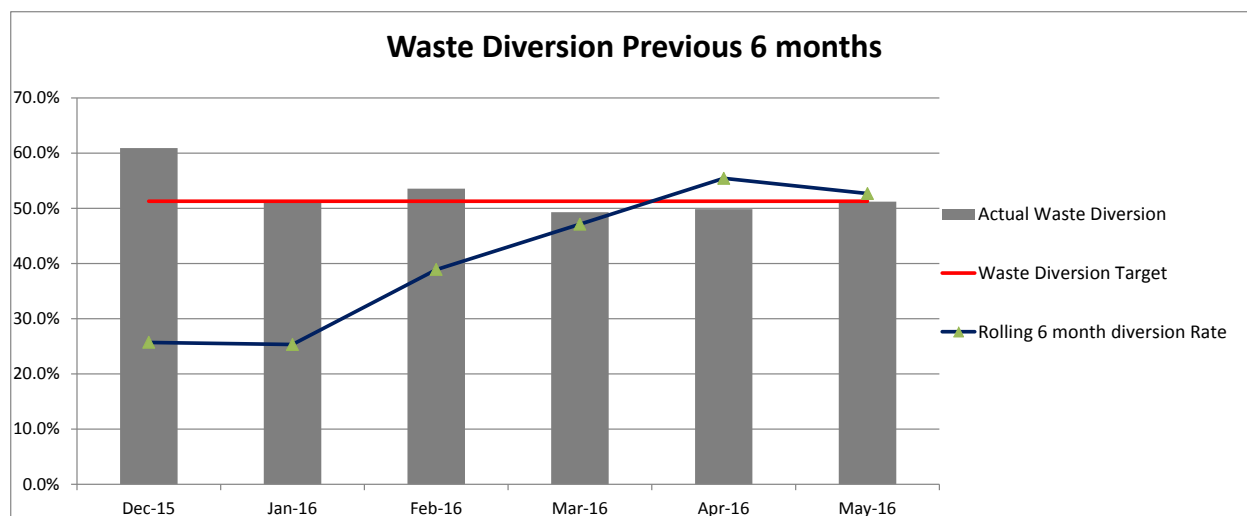
** The compost standard within the RRFA was amended by the revisions to the RRFA approved by Council at its meeting of 6 December 2012 and signed under common seal in May 2013.

*** Financial impacts of the KPI were removed by the revisions to the RRFA approved by Council at its meeting of 6 December 2012 and signed under common seal in May 2013. Ferrous diversion has recommenced.

**** Numerous complaints relating to a single event are treated as a single complaint. Biofilter odour is not registered as a complaint as this is seen as a normal operating odour condition.

Waste Diversion

The average waste diversion for the past six months (December 2015 to May 2016) has been 52.7%.



Project Advisory Group (PAG) as at 23 June 2016

MRC Representatives:

Cr Dot Newton JP
 Brian Callander (CEO)
 Gunther Hoppe
 Cr Samantha Jenkinson (Deputy)

BioVision Representatives:

Craig Barker
 Emmanuel Vivant
 Nial Stock
 Alan Turner (Alternate)

Chairperson:

Ian Watkins

The PAG last met on 8 June 2016.

Items dealt with by the group included:

- Contract Variations (including the maintenance cost discussions)
- Composter Structural Issues
- BioVision Monthly Report/Update
- Compost Marketing and Compost Quality
- Residue management
- Insurance

Copies of the meeting minutes are distributed to the Strategic Working Group members and all MRC Councillors following the meetings.

Community Engagement

The MRC community engagement program continues to be managed via the Community Engagement and Advisory Group (CEAG). At its last meeting held on 11 November 2015 CEAG passed a motion to wind up the group.

FINANCIAL IMPLICATIONS

Operational Expenditure

The Project Operational Summary below sets out the 2015/16 facility operating budget against which operational costs are tracked throughout the year. The variance over budget is as a result of the additional tonnes put through the facility during the year.

Project Operational Costs Summary for 2015/16 Financial Year – for the period ended 31 May 2016

Description	Adopted Budget	Revised Budget	YTD Budget	YTD Actual	\$ Variance	% Variance
Employee Costs						
Salaries	-	-	-	-	-	-
Allowances	-	-	-	-	-	-
Workers Compensation Premium	-	-	-	-	-	-
Consultants and Contract Labour						
Consultancy	35,000	35,000	35,000	31,902	(3,099)	(8.85%)
Contract Labour External	-	-	-	-	-	-
	35,000	35,000	35,000	31,902	(3,099)	(8.85%)
Office Expenses						
Cleaning of Buildings	18,000	11,000	10,084	7,416	(2,668)	(26.46%)
	18,000	11,000	10,084	7,416	(2,668)	(26.46%)
Information System Expenses						
Computer System Maintenance	28,000	20,000	18,335	11,723	(6,612)	(36.06%)
	28,000	20,000	18,335	11,723	(6,612)	(36.06%)
Building Maintenance						
Building Maintenance	21,500	30,999	3,667	-	(3,667)	(100.00%)
Building Security	7,000	7,000	6,417	1,039	(5,377)	(83.80%)
	28,500	37,999	10,083	1,039	(9,044)	(89.69%)
RRF Operation Expenses						
Fencing and Gate Maintenance	15,000	15,000	3,700	3,637	(63)	(1.70%)
Road Maintenance	-	-	-	-	-	-
Bores and Pipework	10,500	10,500	-	5,883	5,883	
Vehicle Wash Facility Operations	-	-	-	-	-	-
Landscaping and Gardens	29,000	20,000	750	8,725	7,975	1063.39%
Compost Disposal	306,225	306,225	280,706	244,683	(36,023)	(12.83%)
Contractor's Fees	20,182,870	20,182,870	17,845,907	17,917,959	72,052	0.40%
	20,543,595	20,534,595	18,131,063	18,180,888	49,825	0.27%
Utilities						
Electricity	10,000	10,000	9,167	5,040	(4,127)	(45.02%)
Rates	34,000	34,000	31,167	75,336	44,169	141.72%
	44,000	44,000	40,333	80,376	40,042	99.28%
Insurance						
Municipal Property Insurance	3,100	3,100	2,842	-	(2,842)	(100.00%)
Public Liability Insurance	5,545	5,545	5,083	-	(5,083)	(100.00%)
	8,645	8,645	7,925	-	(7,925)	(100.00%)
Cost of Borrowings						
Interest on Loans	216,600	216,600	198,550	175,234	(23,316)	(11.74%)
Loan Expenses	8,000	8,000	7,333	9,650	2,317	31.59%
	224,600	224,600	205,883	184,884	(20,999)	(10.20%)
Amortisations						
Amortisation Pre-operating Costs	104,700	104,700	95,975	95,975	-	0.00%
Amortisation Costs	435,500	435,500	399,208	399,208	-	0.00%
	540,200	540,200	495,183	495,183	-	0.00%
Depreciation						
Depreciation on Building	-	23,603	21,637	21,701	64	0.30%
Depreciation on Infrastructure	4,100	26,697	24,471	24,740	269	1.10%
	4,100	50,300	46,108	46,441	333	0.72%
Total Operating Expenditure	21,474,640	21,506,339	18,999,998	19,039,852	39,585	0.21%
Net Total	(21,474,640)	(21,506,339)	(18,999,998)	(19,039,852)	(39,585)	0.21%

COMMUNICATIONS AND EDUCATION REPORT	
File No:	WST/178-02
Attachment(s):	Nil
Date:	24 June 2016
Responsible Officer:	Education Manager

Communication and Education Report – March/April 2016

The Mindarie Regional Council's (MRC) Communications and Education team's main focus is on community engagement within the region. The main objectives are to:

- improve community awareness and understanding of waste issues
- encourage a reduce, reuse, recycle and dispose wisely ethos and behaviours associated with this
- promote MRC's vision of Winning Back Waste and encourage engagement on many levels to divert waste from landfill.

This is largely done through the provision of facility tours, visits to schools and community groups to deliver workshops and talks, displays at community fairs and events and the Earth Carer community outreach program.

The Team works closely with:

- the Member Councils through the Waste Education Strategic Steering Group (WESSG) to support the councils and assist them in delivering their waste messages to the community
- the State Waste Educators Working Groups (WEWG/WENG) which include representatives from the other Regional Councils, Local Governments, WALGA, Waste Wise Schools, KABWA, Waste Authority and a variety of other members (government/community/business) interested in waste issues.

These groups assist in developing and delivering waste messages to the community and with providing support for various waste projects with the view to improve waste minimisation and diversion from landfill.

This report will look to summarise the education activity for the months of March and April 2016.

Community Engagement

Tours

The tours of the MRC facilities (Tamala Park and Resource Recovery Facility) are run on request Monday to Saturday and are popular with people of all age groups and from all walks of life. The duration of each tour ranges from one to three hours depending on the requirement of the group attending.

During the March/April period **10 tours** took place with **229 people** all visiting Tamala Park and with only one group visiting the Resource Recovery Facility (RRF).

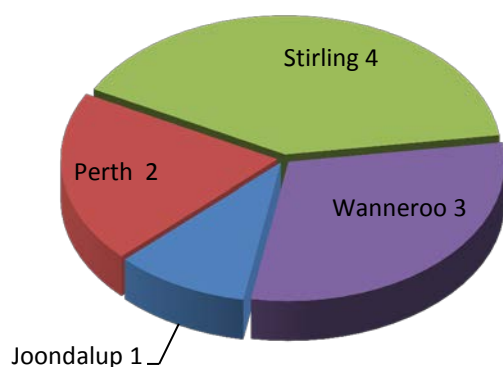
The feedback given about these tours continues to report a high level of participant satisfaction with them being described as very informative. The tours don't just point out operational aspects of the sites but discuss the 'story of waste', engaging people in how the Waste Hierarchy works and discuss behaviours that create the best outcomes.

People are continually amazed at how a 'trip to the tip' can be such an eye opener and be very enjoyable.

TOURS BY COUNCIL	
	Number
Cambridge	0
Joondalup	1
Perth	2
Stirling	4
Victoria Park	0
Vincent	0
Wanneroo	3
Other/mixed	0
TOTAL	10

TOURS BY GROUP	
	Number
Schools	5
Businesses	1
Community	3
Out of School	1
Tertiary	0
TOTAL	10

Tours by Council March - April 2016



Note: No Cambridge, Vic Park, Vincent tours in March and April 2016.

The school tour groups were from: Boyare PS (CoS), Quinns Rocks PS (CoW) and John Septimus Roe Anglican Community School (CoS)

Mobile waste messaging

The education vehicle, a Kia Carnival people mover/van, has had graphics applied to make it a driving message board. “Winning Back Waste”, “Reduce, Reuse, Recycle and Dispose Wisely”, “What bin should it go in? Dispose wisely.” Bright eye catching frogs and earth worms bring a fun element to it as well. It has already proved to be a popular conversation starter as it attends schools and events.



The Roaming Recycler Waste Education Display

The Autumn period tends to be one with a number of community events held throughout the Region.

ROAMING RECYCLER EVENTS	
	No Days Out
Cambridge	1
Joondalup	6
Perth	3
Stirling	2
Victoria Park	4
Vincent	4
Wanneroo	1
Other	0
TOTAL	21

There were 12 events in total.

Of these 10 were community, 1 a Tertiary institution (ECU Earth Day) and 1 school (Heathridge Primary School Welcome Event).

Community Events attended included:

- Joondalup Festival (CoJ)
- Garden Festival (ToVP)
- Buddah Birth day Festival (CoP)
- Psaros Eco fair (CoP)
- Carine Community fair (CoS)
- Glo Ride (CoS)
- Vincent Summer Concert (CoV)
- Hyde park Fair (CoV)



Visits, Talks and Workshops

Talks and visits to schools and community groups remains a focus of the MRC education team. The topics of these talks and visits vary according to the group but the sessions mainly focus on three main areas:

- Organics – composting and worm farming
- The bin system – what goes in what bin
- Waste Hierarchy – reduce, reuse, recycle and dispose wisely.

The duration of the sessions range from an hour through to a full day and, in the case of schools, may be for single classes or for the whole school.

During the March/April period 22 visits/talks were conducted with 12 of them being to schools and childcare centres

Visits to Child Care centres have increased in the last year with the Centres looking to enhance the environmental and sustainability education programs they do with the children.

VISITS/TALKS	
	Number
Cambridge	1
Joondalup	10
Perth	0
Stirling	4
Victoria Park	0
Vincent	0
Wanneroo	7
Other	0
TOTAL	22

TYPES OF TALKS	
	Number
Waste & recycling	12
Composting, worms & gardens	10
Nude Your Food	0
Battery assembly	0
Other	0
TOTAL	22

Talks:

5 Out of School Care organisations had Composting, Worms and Gardens talk

7 Out of School Care organisations had Waste and Recycling talks

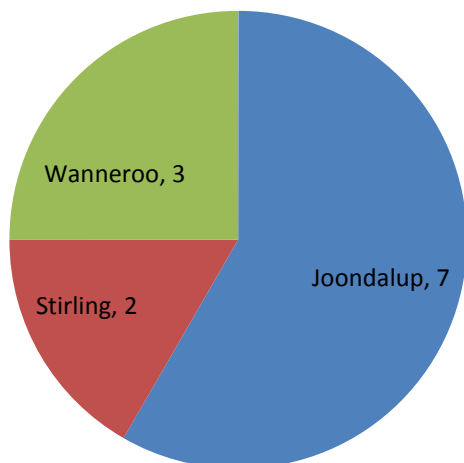
3 schools had Waste and Recycling talks

3 schools had Composting, Worms and Gardens talk

2 community groups had Composting, Worms and Gardens talk – one of these was a joint venture between Harbourside Village (seniors) and Mindarie Primary School

2 Community groups had Waste & Recycling talks

Visits To Schools and Day Care Centres by Council (March - April 2016)



Schools

With the 2016 school year beginning all schools in the region were sent a flyer to inform them of the services the MRC offers to them. In consultation with MRC's education team schools can then use the services MRC provides to enhance their curriculum. Tours, talks, workshops and activities can be tailored to meet the individual requirements of the school.

A workshop for teachers was held to discuss MRC's education program and to connect Earth Carers with schools to assist the schools with their education programs.



Earth Carers

MRC Earth Carers continue to meet and engage with the community. A number of Earth carers link in with Community Garden groups, Transition Towns and other groups of like minded people. These provide very fertile grounds for information exchange and promoting waste wise messages.

The Earth Carers are seen as long term valued people interested in waste and spreading a 'Waste Less' message. Since 2008 370 people have completed the MRC Earth Carer training courses and of them 315 are still active, a good retention rate.

The next Earth Carers training course was held in March 2016, with over 40 people expressing their interest.





Earth carer bike maintenance workshop

- 1 Earth Carer course held in March - 28 people graduated.
- 2 Earth Carer events – Super 6 Schools Workshop and Super 6 Energy for Earth Day talk. Proved quite popular with 28 and 29 people attending respectively.
- 1 tour of the SMRC facility – annual event to give new Earth Carers the opportunity to visit a recycling facility (as this visit is no longer covered in our Earth Carer program).



'Earth Carers North' Facebook page continues to grow, now with 471 likes, with a weekly reach of between 300 and 2,000 people and over 70 regular contributors/engaged. This has proved a great way to enable the Earth Carers to stay connected and discuss issues of interest.

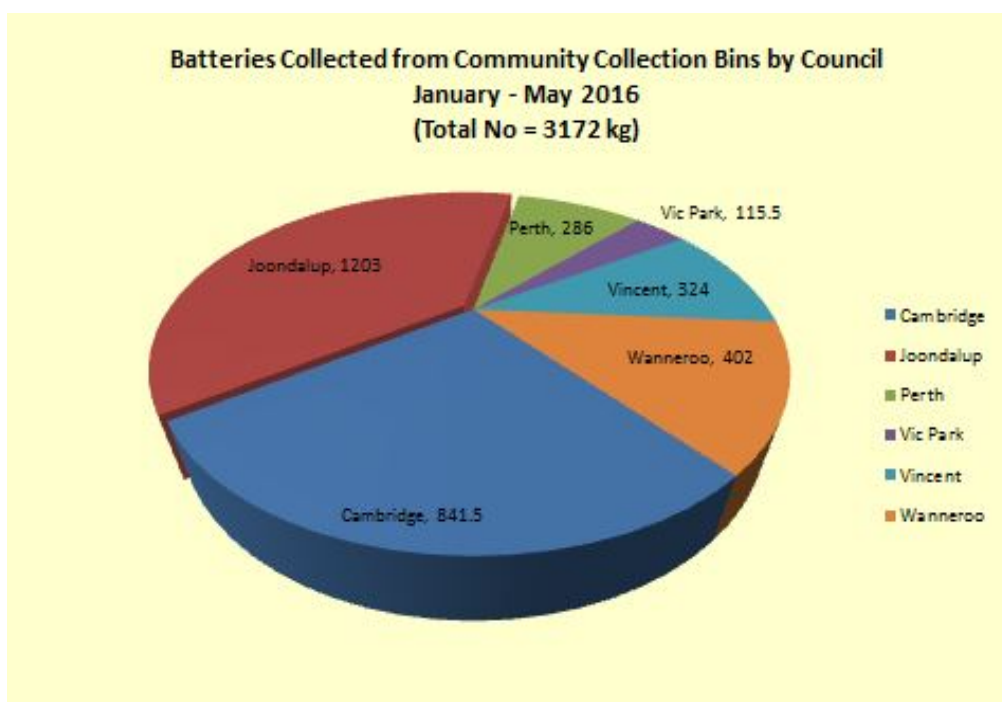
Reduce, Reuse, Recycle and Dispose Wisely

There are many items that the MRC and the Member Councils no longer want residents to put in any of the verge collection bins (green, yellow or red). A number of programs have been set up in the Region to help dispose of these items effectively.

Battery Program

Batteries from school and community bins continued to be collected in large numbers. Importantly most of these batteries previously would have gone into the household green top wheelie-bin then to the RRF and the chemicals contained within ultimately into the compost. However large quantities of batteries are bought and disposed of and although the MRC is collecting and recycling tonnes of batteries it is only the tip of the iceberg.



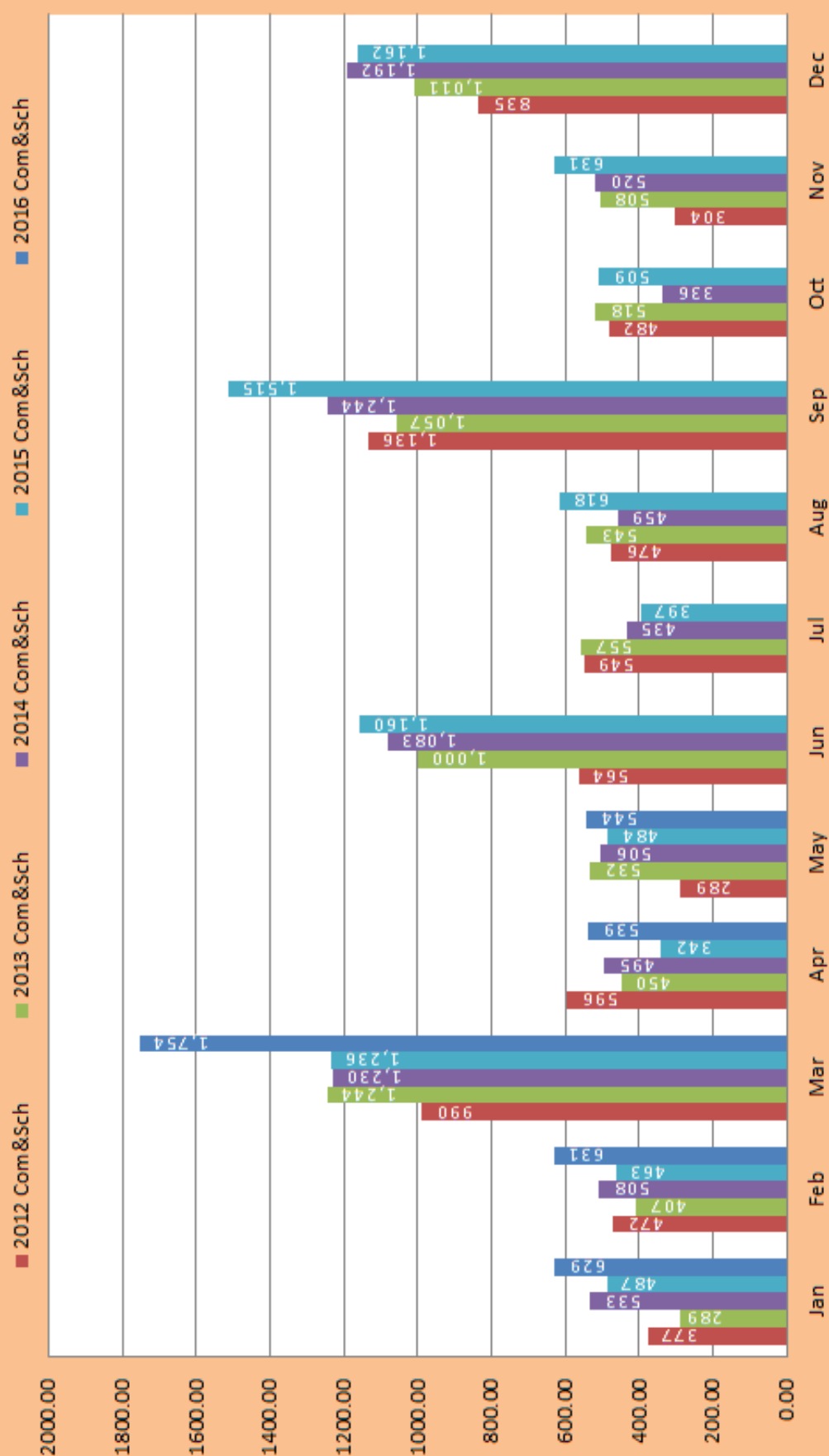


All of the battery bins have had a flap placed over the bin top hole to try to discourage people from dropping rubbish into the bins, contaminating the battery contained within.



The schools battery program continues to grow. The schools find it is a good way to engage students in a meaningful recycling program. From an MRC point of view it offers collection sites throughout the community and unlike the public battery collection bins the school ones are generally free of contamination. The battery program is particularly important to MRC operations in that batteries have shown themselves to be the cause of many of the landfill fires at Tamala Park and they are still a significant problem at the RRF – providing a source of metals contamination.

MRC Community & School Battery Collection by Month 2011 to 2016 (kg)



Cfl Program

The MRC in conjunction with the member councils also collects cfls and fluoro tubes from a number of community drop off points.

Fluoros are also a household hazardous waste and as such should not be disposed of in household waste or recycling bins. The table below showing the weight of globes (kg) collected in the first four months of 2015 and 2016

2015	37	33.5	43	41
Cambridge	12	10	8	10
Joondalup	10	11	19	19
Perth	0	1	0	
Vic Park	2	0.5	1.5	0.5
Vincent	13	11	12	11
Wanneroo			2.5	0.5
2016	72	81	94.5	65.5
Cambridge	37.5	43.5	41.5	29
Joondalup	20	23	23	20
Perth				
Vic Park	0.5	2	5.5	3
Vincent	13	11	22	12
Wanneroo	1	1.5	2.5	1.5

Nearly 2,000kg of cfls have been collected through this program over the last 4 years.

.Recycling Stations

The community has responded well to local community drop off points for batteries and cfl globes resulting in the trial to expand the number and types of problematic wastes collected. The MRC in response to this need for a multi-purpose recycling station have upgraded the CFL recycling stations (below) to enable them to now accept not only CFL's but batteries, ink cartridges, mobile phones and in some cases all other non-cfl globe types.

The MRC is working with the member councils to find suitable locations for these recycling stations.



E-Waste

The MRC has an e-waste contract that covers all of its member councils enabling free recycling of computers, TVs and other peripheral items that can be plugged into these devices. In addition to providing a permanent drop off site at Tamala Park this contract has enabled member councils to review the way they handle e-waste, for example, the City of Joondalup has banned e-waste from its verge collections through holding regular e-waste collection days throughout the year.

The last e-waste collection events took place in the City of Joondalup and the Town of Cambridge in February and the MRC are working with member councils to hold the next round of events in September.

Glass

The **'No Glass' Campaign**, to create behavioural change by residents to reduce the glass component in the compost, was rolled out into the participating councils, these being Cities of Joondalup, Vincent and Wanneroo and the Town of Victoria Park. These being chosen as they currently deliver the majority of waste received by the RRF.

The project uses a sticker placed on all the green lid bins and a flyer to explain why glass in the green lid bin is an issue. The sticker campaign was supported by advertising in newspapers and online via council websites and social media networks. Removing the glass from the green top bin having many potential benefits.



No Glass displays and banners have been taken to all events held within the participating councils to promote the campaign and engage in discussion with the community. Surveys were also conducted to gauge resident awareness of the campaign and behaviour change as a result. Most of the feedback has been very positive.

NO GLASS in your GREEN top bin.

Put glass (whole or broken) in the yellow top recycling bin

The organic waste (kitchen scraps, paper, lawn clippings, leaves, prunings etc.) from your green top bin is used to make compost. It's really important to keep glass out of this bin.

If there's glass in this bin, it can contaminate the compost.

For more information contact Mindarie Regional Council. Call 9306 6303 or visit our website www.mrc.wa.gov.au

A prominent display has toured the different libraries in the Cities of Joondalup, Vincent and Wanneroo and the Town of Victoria Park, to further promote the campaign.



With residents in the Cities of Joondalup, Vincent, Wanneroo and Town of Victoria Park being told not to place glass in their green top bin there has been an increase in inquiries as where to dispose of the glass especially in the case of where their yellow top recycling bins are already full of other recyclables.

This has seen an increase in glass bottles and jars being dropped at Tamala Park Recycling over 8 tonnes a month since December when the campaign started. Globes collected in the same period have doubled compared to the same period last year.

WESSG

The Waste Education Strategic Steering Group (WESSG) meets at the end of each month. These meetings continue to be an important forum for exchanging ideas and keeping everyone updated on happenings associated with waste within the Member Councils. The Group has been invaluable in providing networking opportunity for its participants. People aren't confined to council boundaries so being aware of what is happening elsewhere is important in delivering messages to the community.

The importance of **Regional messaging** remains on the agenda as does the group's role in dealing with regional waste issues. Many events and activities within the Region occur regularly with a Regional calendar being developed to help streamline communications, messaging and coordination between both the MRC and the Member Councils and the Member Councils themselves. This to share the load and get best value for the Region, including looking at ways to improve waste diversion figures for the Region.

The **Waste Diversion Report Card** continues to be produced with quarterly information on how the MRC as a Region is tracking with regard to overall waste diversion. The report includes waste and recycling figures from each of the member councils. Member Councils are encouraged to report on activities where waste is diverted from landfill i.e. verge mattress and steel collections to ensure the diversion figures are as accurate as possible.

Whilst some councils are performing well others for a variety of reasons are not. However as a region, the collective efforts, are seeing a gradual rise in the diversion figure. The Jan – March 2016 quarter showing a Regional diversion of about 40% compared with less than 30% in the same period last year (2015).

Event planning, Compost in May, Plastic Free July, Garage Sale Trail, e-waste and HHW events, public place recycling initiatives and clothes drop off days have all been discussed at the meetings.

The Group is also developing a **Calendar of Events** for 2016/2017. This calendar will have the key projects/activities that each council is planning for this coming year to enable there be greater opportunities to learn/share and assist each other in our educational/community engagement work.

WA Weekender

The MRC participated in 5 programs of the WA Weekender program screened on Channel 7 during April. The segments featured:

- Weekender clean up jobs (disposing of unwanted items)
 - Disposing of Glass
 - Household hazardous Waste
 - Disposing of Asbestos
 - Disposing of electrical goods
 - Tips on loading your trailer
-

Waste Educators

The MRC education team participates in the State Waste Educators Working Groups (WEWG/WENG) which include representatives from the other Regional Councils, Local Governments, WALGA, Waste Wise Schools, KABWA, Waste Authority and a variety of other members (government/community/business) interested in waste issues.

This group meets monthly to share ideas, programs and resources.

The group for 2016 is looking at developing resources and a campaign to target nappies and their correct disposal, many of which are disposed of incorrectly in the recycling bin. The campaign will also focus on reducing the number of disposable nappies which totals millions each year in Australia.



DOCUMENTS EXECUTED BY AFFIXING THE COMMON SEAL	
File No:	GOV/38
Appendix(s):	Nil
Date:	24 June 2016
Responsible Officer:	Chief Executive Officer

During the period 6 February 2016 and 24 June 2016, two (2) documents were executed by affixing the Common Seal. A summary is provided below:

Date	Document	Signed/Sealed
08/04/2016	Deed of Amendment Second Standstill Deed	Sealed and signed by Chair and CEO
19/05/2016	Deed of Assignment – Sub Lease and Licence Agreement for the Landfill Gas Facility at Tamala Park	Sealed and signed by Chair and CEO

If further information is required on the documents signed under common seal please contact the Chief Executive Officer, Brian Callander on 9306 6302.



Government of **Western Australia**
Disability Services Commission



Enquiries: Sue Henson
 Contact: (08) 9426 9353



Mr Kevin Poynton
 Chief Executive Officer
 Mindarie Regional Council
 PO Box 2746
 Clarkson WA 6030

Dear Mr Poynton

Thank you for lodging your amended Disability Access and Inclusion Plan (DAIP) with the Disability Services Commission.

Your amended DAIP meets the requirements of the *Disability Services Act 1993*. This commitment to the needs of people with disability by Mindarie Regional Council to be commended and I wish you success in the Plan's implementation.

If you have any further queries about your DAIP or wish to discuss its implementation please contact Sue Henson, Senior Access and Inclusion Officer on (08) 9426 9353.

Yours sincerely

Linda Sperring
 Director Intergovernmental Relations and Legislation
 DISABILITY SERVICES COMMISSION

23 May 2016