



# **INFORMATION BULLETIN**

**Issue No. 27  
February 2016**



## CONTENTS PAGE

Item	Page No.
Resource Recovery Facility Update Report	3
Communications and Education Update Report	10
Documents Executed by affixing the Common Seal	25

---

<b>RESOURCE RECOVERY FACILITY UPDATE REPORT</b>	
<b>File No:</b>	<b>WST/13-05</b>
<b>Attachment/s:</b>	<b>Nil</b>
<b>Date:</b>	<b>31 January 2016</b>
<b>Prepared by:</b>	<b>Director Corporate Services</b>

This report presents a summary of activities that have taken place in the reporting period covering 18 November 2015 to 31 January 2016.

## **ONGOING MATTERS**

### Composter Replacement

The new composters have been successfully installed at the Resource Recovery Facility (RRF) and have been recommissioned into production. The RRF is now back at full production is achieving the scheduled waste throughput.

Based on year to date results and the forecast delivery schedule, it is anticipated that 75,800 tonnes will be processed by the RRF this financial year. This is expected to return to 100,000 tonnes for the 2016/17 financial year.

### No Glass Campaign

During the last quarter of 2015, the Mindarie Regional Council (MRC) rolled out a 'No Glass in the green top bin' campaign, aimed specifically at reducing the amount of glass being diverted to the RRF.

The campaign was rolled out to four councils who are the primary suppliers of waste to the RRF. While the final results from the RRF regarding any reduction of glass in the final product and reduction of the glass fraction being returned to landfill are still pending, indicative tests are showing that the program has been successful in reducing the amount of glass in the RRF feedstock.

## **OPERATIONAL INFORMATION**

### Waste Delivery

#### **Waste Delivery Summary for Reporting Period**

<b>MONTH</b>	<b>SCHEDULED TONNES</b>	<b>DELIVERED TONNES</b>	<b>DIFFERENCE TONNES</b>
November 2015	8,400	3,336	(5,064)
December 2015	8,800	9,105	305
January 2016	8,400	8,243	(157)

For the 7<sup>th</sup> Contract Year, for the period to 31 January 2016, the RRF was 24,037 tonnes behind schedule as a result of the planned shutdown for the replacement of the composters.

With the exception of the shutdown for the composter replacement, the RRF is operating as anticipated in the Resource Recovery Facility Agreement (RRFA), with average availability of 74% over the past 12 months.

---

---

On a monthly basis, Additional Tonnes (those tonnes greater than the monthly scheduled tonnes) only incur the Variable Operating Cost charge, but not the Capital Cost or Fixed Operating Cost charges.

Unavailable Tonnes (those tonnes less than the monthly scheduled tonnes) are not paid for unless:

- Within the Contract Year there is a positive balance of Additional Tonnes, these Additional Tonnes can be off-set against the Unavailable Tonnes. In this case, the off-set Additional Tonnes incur the full gate fee cost less the Variable Operating Cost (which has already been paid on the Additional Tonnes); or
- If the RRF Availability for a month is less than 92% of the monthly Scheduled Tonnes and there are no accumulated Additional Tonnes remaining to be off-set, then the MRC is required to pay the Capital Cost on all Unavailable Tonnes up to 92% of the monthly Scheduled Tonnes.

At the end of the Contract Year, if 100,000 tonnes of waste have been delivered to the RRF then the above “overs and unders” system should balance out.

#### Waste Diversion

Waste Diversion for the past six months (August 2015 to January 2016) has improved slightly to 25.3% with a Waste Diversion Target of 51.3%. This anomaly will continue to reverse now that once the composter repairs have been completed.

#### Operational Activities

BioVision has notified the MRC that the coarse heavy fraction does not consistently pass the requirements to be classified as a Class II waste stream. The Department of Environment Regulation has provided permission for the MRC to landfill this waste at Tamala Park.

#### Community Complaints

BioVision last met with its community stakeholder group on 30 November 2015 and no serious issues were raised.

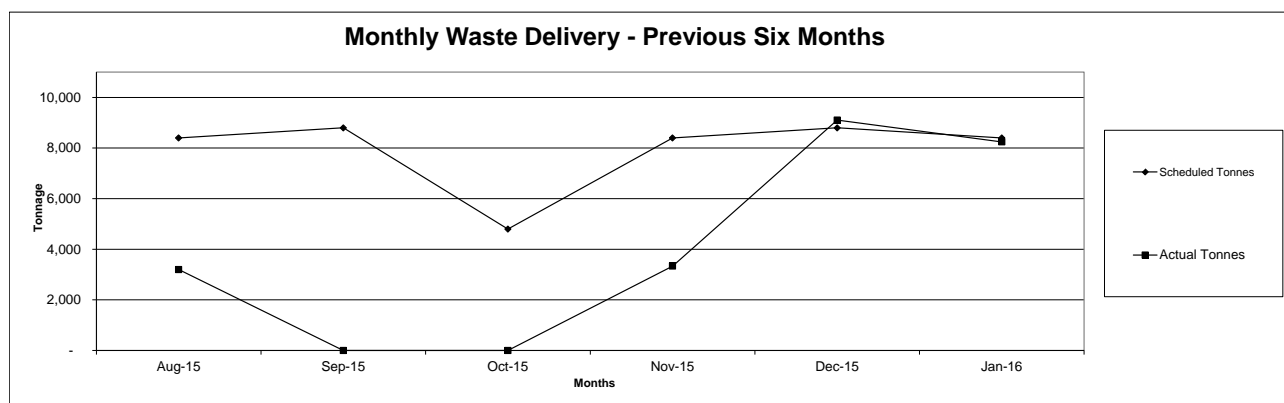
#### **COMMUNITY COMPLAINTS SUMMARY FOR THE REPORTING PERIOD**

<b>Date</b>	<b>Complaint</b>	<b>From</b>	<b>Outcome</b>
Nil	No complaints have been received	Nil	Nil

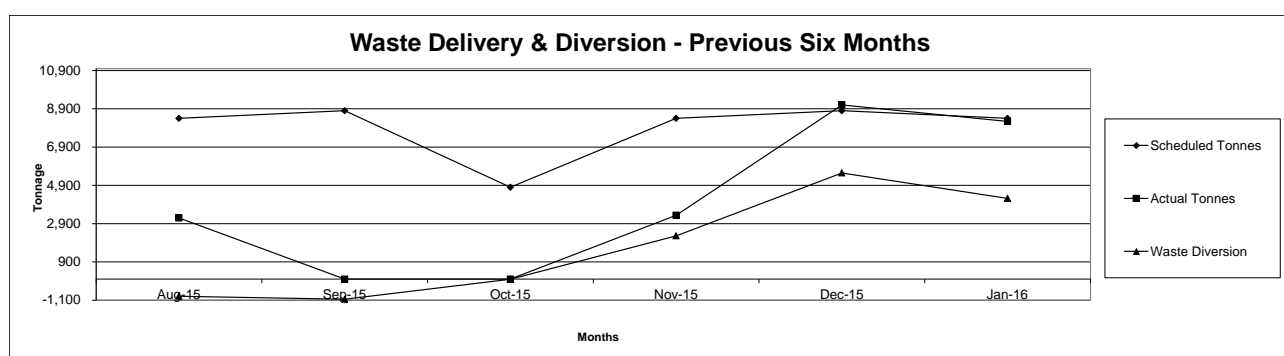
---

The graphs below provide data up to **31 January 2016**.

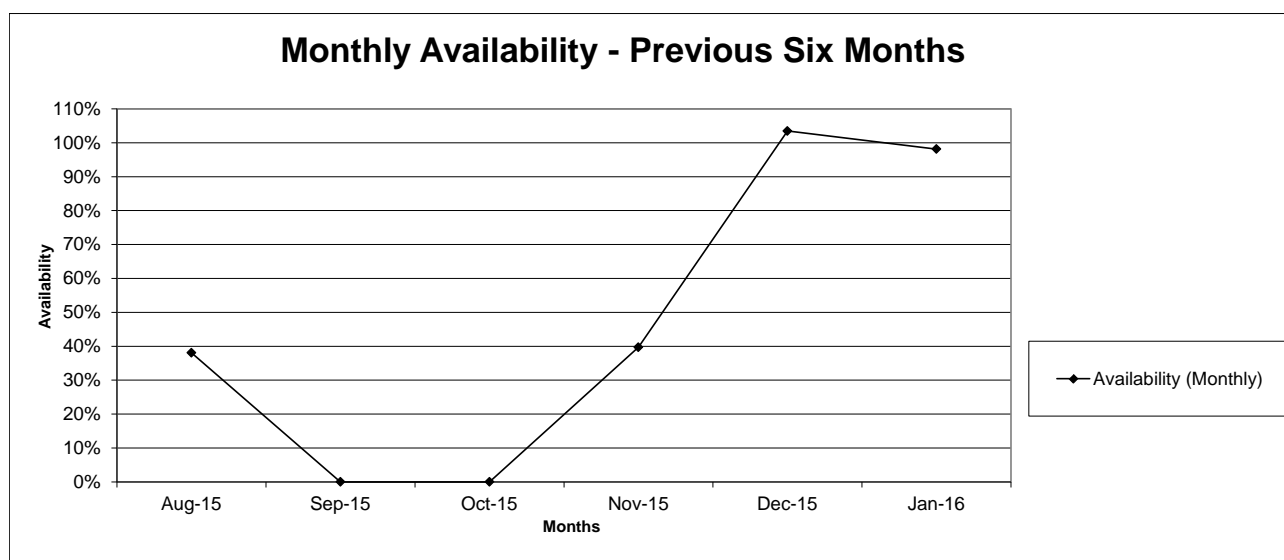
**Graph No. 1 – Monthly Waste Delivery – Previous Six Months**

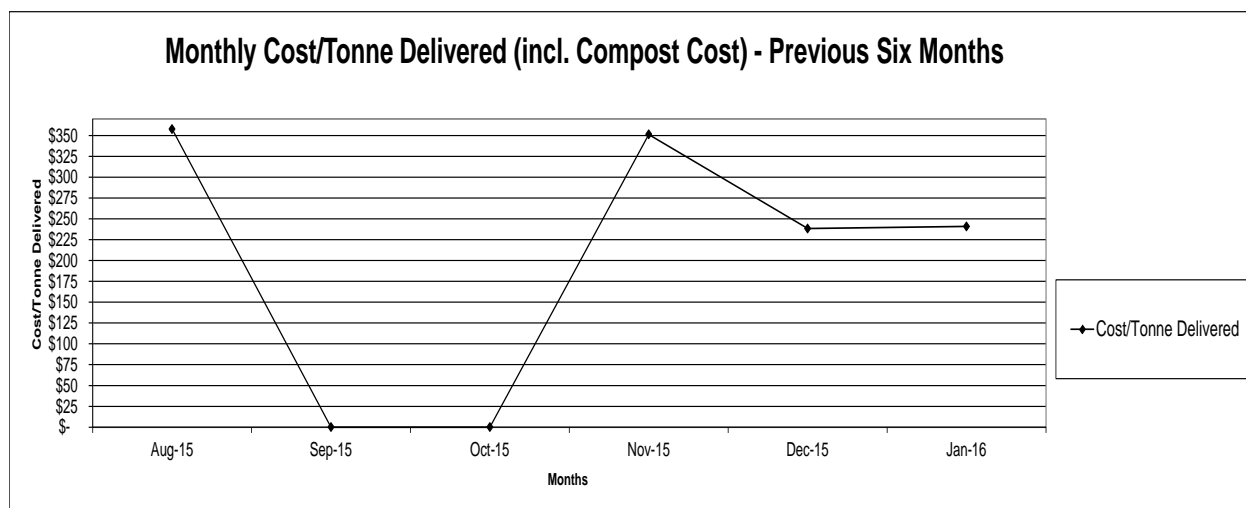
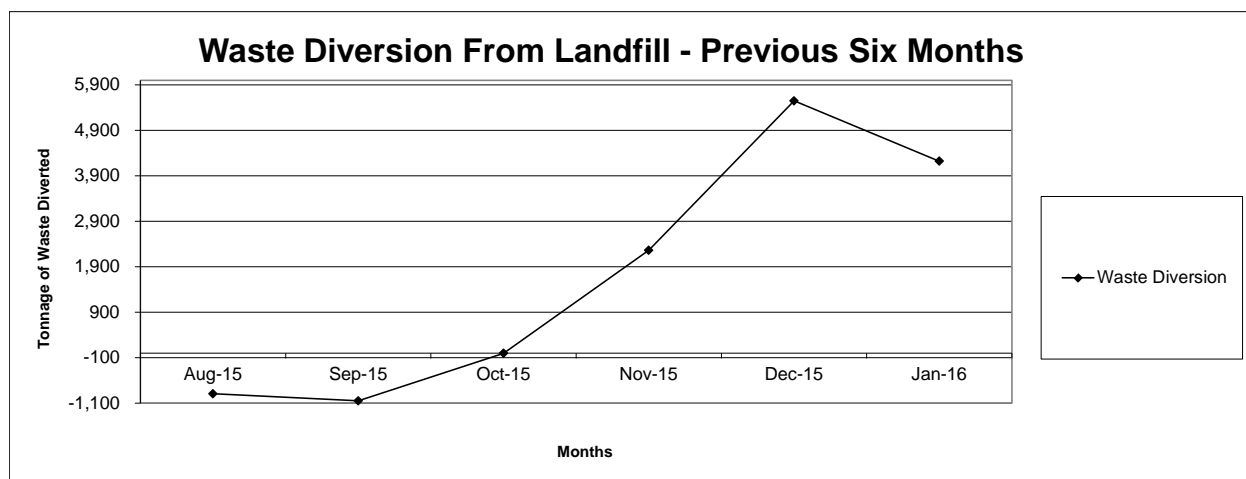


**Graph No. 2 – Waste Delivery & Diversion – Previous Six Months**



**Graph No. 3 – Monthly Availability – Previous Six Months**



**Graph No. 4 – Monthly Cost/tonne Delivered (incl. Compost Cost) – Previous Six Months****Graph No. 5 – Waste Diversion from Landfill – Previous Six Months**

---

## Performance Indicators

KPI's as per the RRFA are as follows:

**Table No. 1 – KPI Summary (to 31 January 2016)**

KPI	Target	Previous 6 Months	Nov	Dec	Jan
Availability*	95%	47%	40%	103%	98%
Environmental Standard - Number of Breaches	0	0	0	0	0
Waste Diversion	51.3%	25.3%	67.8%	60.9%	51.2%
Quality of Compost - Number of Breaches**	0	1	0	0	1
Quantity of Recyclable Packaging ***	0.80%	n/a	0%	0%	1.35%
Health and Safety - Number of LTI's	0	0	0	0	0
Community Acceptance - Number of Complaints ****	0	0	0	0	0
Project Culture - PAG Chairperson Score	100	100	100	100	100

\* The Target Availability during the Initial Operating Period is to achieve an Availability of greater than 95% over a six-month period.

\*\* The compost standard within the RRFA was amended by the revisions to the RRFA approved by Council at its meeting of 6 December 2012 and signed under common seal in May 2013.

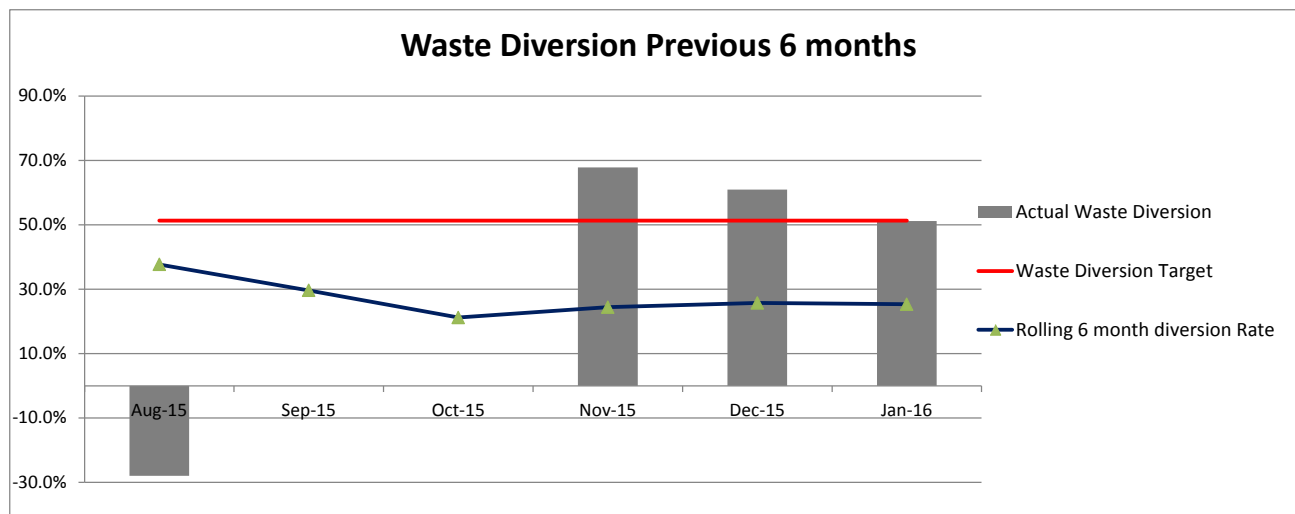
\*\*\* Financial impacts of the KPI were removed by the revisions to the RRFA approved by Council at its meeting of 6 December 2012 and signed under common seal in May 2013. Ferrous diversion has recommenced.

\*\*\*\* Numerous complaints relating to a single event are treated as a single complaint. Biofilter odour is not registered as a complaint as this is seen as a normal operating odour condition.

---

### Waste Diversion

The average waste diversion for the past six months (August 2015 to January 2016) has been 25.3%.



### Project Advisory Group (PAG) as at 31 January 2016

#### **MRC Representatives:**

Cr Dot Newton JP  
 Brian Callander (CEO)  
 Gunther Hoppe  
 Cr Samantha Jenkinson (Deputy)

#### **BioVision Representatives:**

Craig Barker  
 Emmanuel Vivant  
 Nial Stock  
 Alan Turner (Alternate)

#### **Chairperson:**

Ian Watkins

The PAG last met on 9 December 2015.

Items dealt with by the group included:

- Contract Variations (including the maintenance cost discussions)
- Composter Structural Issues
- BioVision Monthly Report/Update
- Compost Marketing and Compost Quality
- Residue management
- Insurance

Copies of the meeting minutes are distributed to the Strategic Working Group members and all MRC Councillors following the meetings.

### Community Engagement

The MRC community engagement program continues to be managed via the Community Engagement and Advisory Group (CEAG). At its last meeting held on 11 November 2015 CEAG passed a motion to wind up the group.



## FINANCIAL IMPLICATIONS

### Operational Expenditure

The Project Operational Summary below sets out the 2015/16 facility operating budget against which operational costs are tracked throughout the year. The variance over budget is as a result of the additional tonnes put through the facility during the year.

#### Project Operational Costs Summary for 2015/16 Financial Year – for the period ended 31 December 2015

Description	Adopted Budget	YTD Budget	YTD Actual	\$ Variance	% Variance
<b>Resource Recovery Facility</b>					
Operating Expenditure					
Employee Costs					
Salaries	-	-	-	-	
Allowances	-	-	-	-	
Workers Compensation Premium	-	-	-	-	
	-	-	-	-	
Consultants and Contract Labour					
Consultancy	35,000	8,000	7,766	(234)	(2.93%)
Contract Labour External	-	-	-	-	
	35,000	8,000	7,766	(234)	(2.93%)
Office Expenses					
Cleaning of Buildings	18,000	9,000	2,937	(6,063)	(67.36%)
	18,000	9,000	2,937	(6,063)	(67.36%)
Information System Expenses					
Computer System Maintenance	28,000	14,000	6,847	(7,153)	(51.10%)
	28,000	14,000	6,847	(7,153)	(51.10%)
Building Maintenance					
Building Maintenance	21,500	2,000	-	(2,000)	(100.00%)
Building Security	7,000	3,500	645	(2,855)	(81.57%)
	28,500	5,500	645	(4,855)	(88.27%)
RRF Operation Expenses					
Fencing and Gate Maintenance	15,000	3,700	3,637	(63)	(1.70%)
Road Maintenance	-	-	-	-	
Bores and Pipework	10,500	-	510	510	
Vehicle Wash Facility Operations	-	-	-	-	
Landscaping and Gardens	29,000	750	6,103	5,353	713.70%
Compost Disposal	306,225	153,113	91,144	(61,969)	(40.47%)
Contractor's Fees	20,182,870	6,479,764	7,642,658	1,162,894	17.95%
	20,543,595	6,637,327	7,744,052	1,106,726	16.67%
Utilities					
Electricity	10,000	5,000	-	(5,000)	(100.00%)
Rates	34,000	17,000	12,299	(4,701)	(27.65%)
	44,000	22,000	12,299	(9,701)	(44.09%)
Insurance					
Municipal Property Insurance	3,100	1,550	-	(1,550)	(100.00%)
Public Liability Insurance	5,545	2,773	-	(2,773)	(100.00%)
	8,645	4,323	-	(4,323)	(100.00%)
Cost of Borrowings					
Interest on Loans	216,600	108,300	97,780	(10,520)	(9.71%)
Loan Expenses	8,000	4,000	4,900	900	22.50%
	224,600	112,300	102,680	(9,620)	(8.57%)
Amortisations					
Amortisation Pre-operating Costs	104,700	52,350	52,350	-	0.00%
Amortisation Costs	435,500	217,750	217,750	-	0.00%
	540,200	270,100	270,100	-	0.00%
Depreciation					
Depreciation on Building	-	-	11,867	11,867	
Depreciation on Infrastructure	4,100	2,050	13,617	11,567	564.22%
	4,100	2,050	25,484	23,434	1143.09%
<b>Total Operating Expenditure</b>	<b>21,474,640</b>	<b>7,084,599</b>	<b>8,172,810</b>	<b>1,076,644</b>	<b>15.20%</b>
<b>Net Total</b>	<b>(21,474,640)</b>	<b>(7,084,599)</b>	<b>(8,172,810)</b>	<b>(1,076,644)</b>	<b>15.20%</b>

<b>COMMUNICATIONS AND EDUCATION REPORT</b>	
<b>File No:</b>	<b>WST/178-02</b>
<b>Attachment(s):</b>	<b>Nil</b>
<b>Date:</b>	<b>2 February 2016</b>
<b>Responsible Officer:</b>	<b>Education Manager</b>

## **Communication and Education Report – November/December 2015**

The Mindarie Regional Council's (MRC) Communications and Education team's main focus is on community engagement within the region. The main objectives are to:

- improve community awareness and understanding of waste issues
- encourage a reduce, reuse, recycle and dispose wisely ethos and behaviours associated with this
- promote MRC's vision of Winning Back Waste and encourage engagement on many levels to divert waste from landfill.

This is largely done through the provision of facility tours, visits to schools and community groups to deliver workshops and talks, displays at community fairs and events and the Earth Carer community outreach program.

The Team works closely with:

- the Member Councils through the Waste Education Strategic Steering Group (WESSG) to support the councils and assist them in delivering their waste messages to the community
- the State Waste Educators Working Groups (WEWG/WENG) which include representatives from the other Regional Councils, Local Governments, WALGA, Waste Wise Schools, KABWA, Waste Authority and a variety of other members (government/community/business) interested in waste issues.

These groups assist in developing and delivering waste messages to the community and with providing support for various waste projects with the view to improve waste minimisation and diversion from landfill.

This report will look to summarise the education activity for the months of November/December 2015.

## **Community Engagement**

### **Tours**

The tours of the MRC facilities (Tamala Park and Resource Recovery Facility) are run on request Monday to Saturday and are popular with people of all age groups and from all walks of life. The duration of each tour ranges from one to three hours depending on the requirement of the group attending.

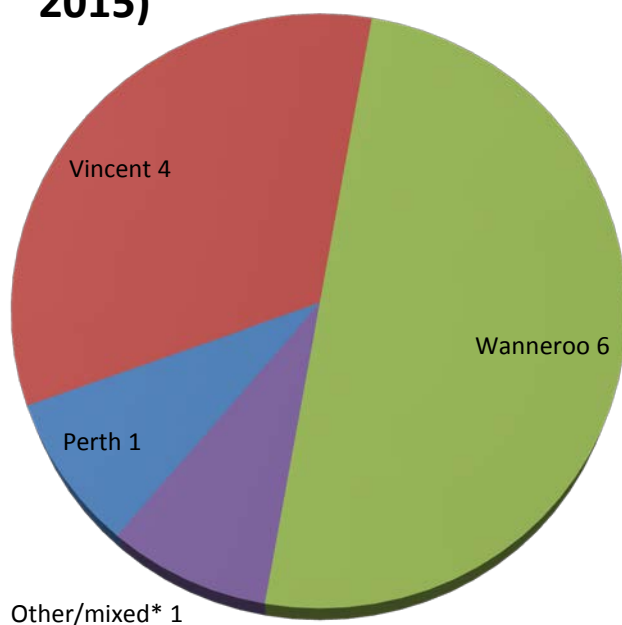
During the November/December period 12 tours took place with 278 people all visiting Tamala Park and with only 1 group also visiting the Resource Recovery Facility (RRF).

Although the RRF was operational for the latter part of this period, no advanced bookings were taken just in case there were delays with the facility reopening.

The feedback given about these tours reports a high level of participant satisfaction with them being described as very informative. The tours don't just point out operational

aspects of the site but discuss the 'story of waste', engaging people in how the Waste Hierarchy works and discuss behaviours that create the best outcomes. People are continually amazed at how a 'trip to the tip' can be such an eye opener and very enjoyable.

### Tours by Council (November - December 2015)



These tours were represented by the following groups:

TOURS BY GROUP	
	Number
Schools	9
Businesses	1
Community	2
Out of School	0
Tertiary	0
<b>TOTAL</b>	<b>12</b>

The schools visiting the MRC facilities were: Mindarie Senior College, Wanneroo Primary School, Mt Hawthorn Primary School and Lansdale Christian School.

### The Roaming Recycler Waste Education Display

With the lead up to Christmas it continues to be a busy period of community events throughout the Region.

#### ROAMING RECYCLER EVENTS

	No Days Out
Cambridge	2
Joondalup	4
Perth	1
Stirling	2
Victoria Park	1
Vincent	3
Wanneroo	4
Other	0
<b>TOTAL</b>	<b>17</b>

The events were both large and small and included: Kinross PS fete, Beaufort Street Festival; Mullaloo Beach PS fete, Bold Park Family Day, Wanneroo Show, Vic Park Christmas, Osborne Park Show; Light Up Leederville, Music in the Park (City of Joondalup), Christmas Festival (Town of Cambridge), Spring Festival (City of Perth) and Mt Hawthorn Community Fair.

#### Earth Carers

MRC Earth Carers continue to meet and engage with the community. A number of Earth carers link in with Community Garden groups, Transition Towns and other groups of like minded people. These provide very fertile grounds for information exchange and promoting waste wise messages.

The Earth Carers are seen as long term valued people interested in waste and spreading a 'Waste Less' message. Since 2008 370 people have completed the MRC Earth Carer training courses and of them 315 are still active, a good retention rate.

EARTH CARER EVENTS/TALKS July - Dec 2015		
	No of Course sessions	No of Events
Earth Carers	6	10
EC Advanced	5	5
EC Kids	0	0

'Earth Carers North' Facebook page continues to grow, now with 380 likes, with a weekly reach of between 300 and 2,000 people and over 70 regular contributors/engaged. This has proved a great way to enable the Earth Carers to stay connected and discuss issues of interest.

An Advanced Earth Carers course commenced in July with 12 Earth Carers participating. These are Earth Carers who have been with us for a while and want to learn more. They revise their training and extend their knowledge with the course culminating in the completion of a waste related project. Below are the Advanced Earth Carers of 2015.



### **Talks and Visits**

Talks and visits to schools and community groups remains a focus of the MRC education team. The topics of these talks and visits vary according to the group but the sessions mainly focus on three main areas:

- Organics – composting and worm farming
- The bin system – what goes in what bin
- Waste Hierarchy – reduce, reuse, recycle and dispose wisely.

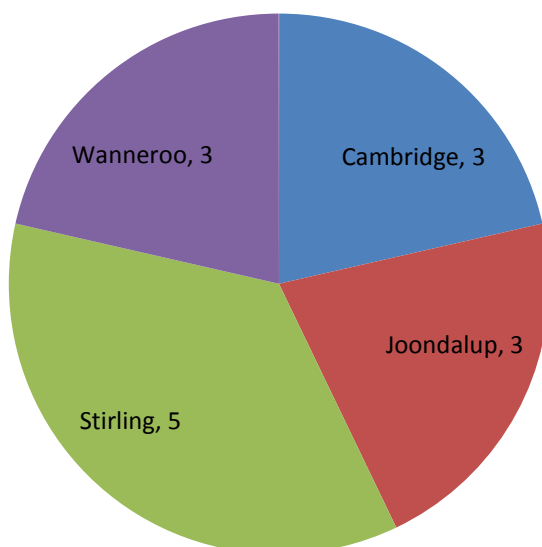
The duration of the sessions range from an hour through to a full day and, in the case of schools, may be for single classes or for the whole school.

During the November/December period 15 visits/talks were conducted with 14 of them being to schools and childcare centres.

Visits to Child Care centres have increased in the last year with the Centres looking to enhance the environmental and sustainability education programs they do with the children.

---

### Visits To Schools and Day Care Centres by Council (November-December 2015)



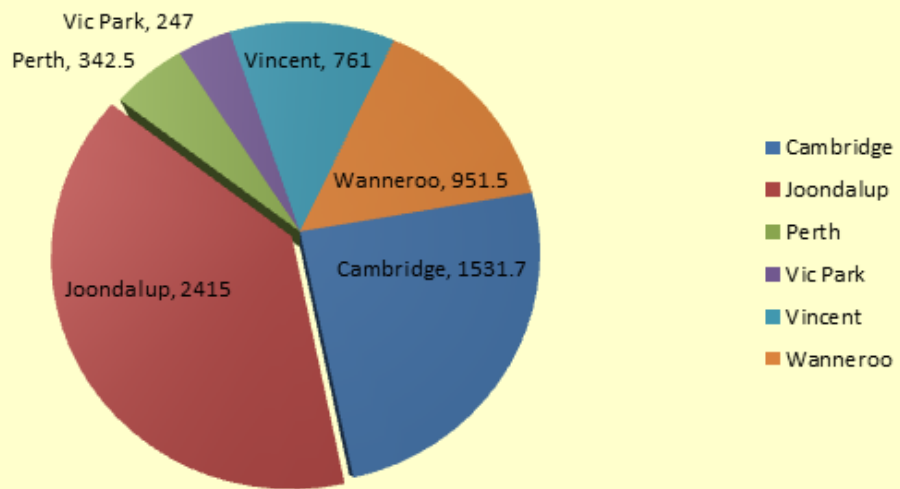
TYPES OF TALKS	
	Number
Waste & recycling	7
Composting, worms & gardens	8
Nude Your Food	0
Battery assembly	0
Other	0
<b>TOTAL</b>	<b>15</b>

### Reduce, Reuse, Recycle and Dispose Wisely

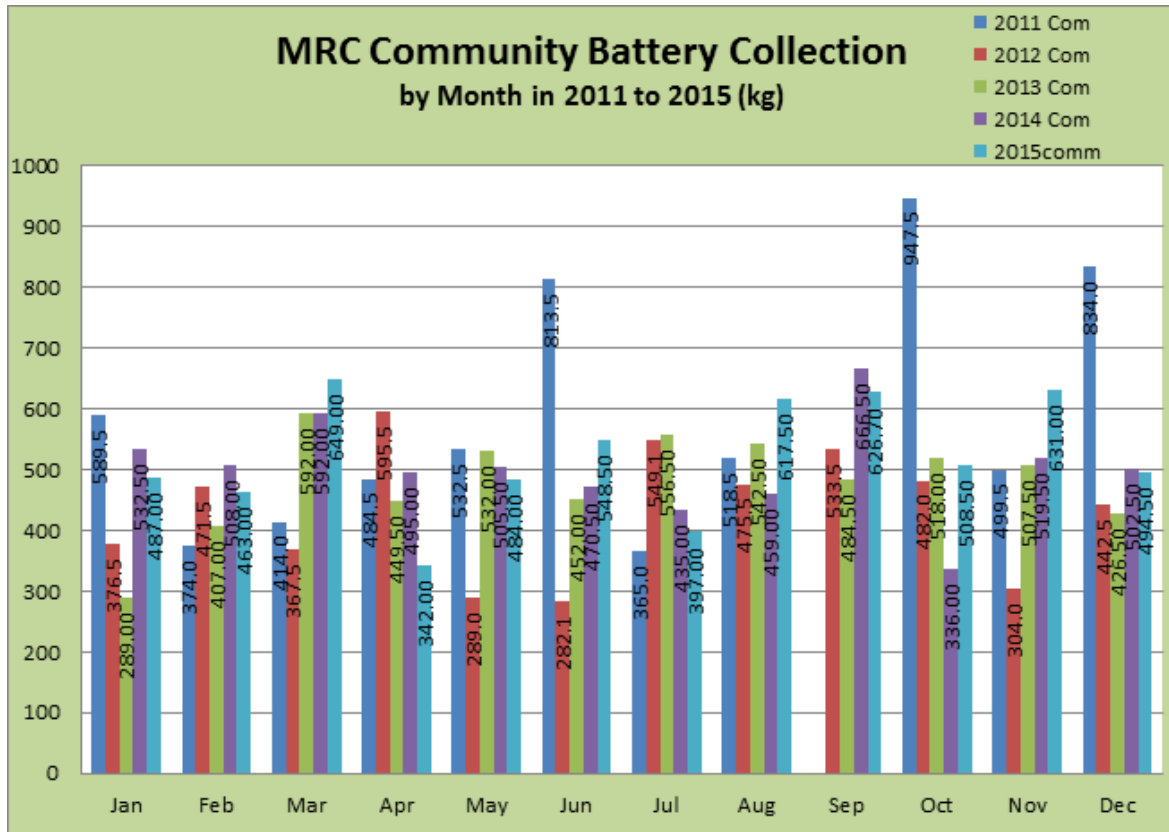
#### Battery Program

Batteries from school and community bins continued to be collected in large numbers. Importantly most of these batteries previously would have gone into the household green top wheelie-bin then to the RRF and the chemicals contained within ultimately into the compost. However large quantities of batteries are bought and disposed of and although the MRC is collecting and recycling tonnes of batteries it is only the tip of the iceberg.

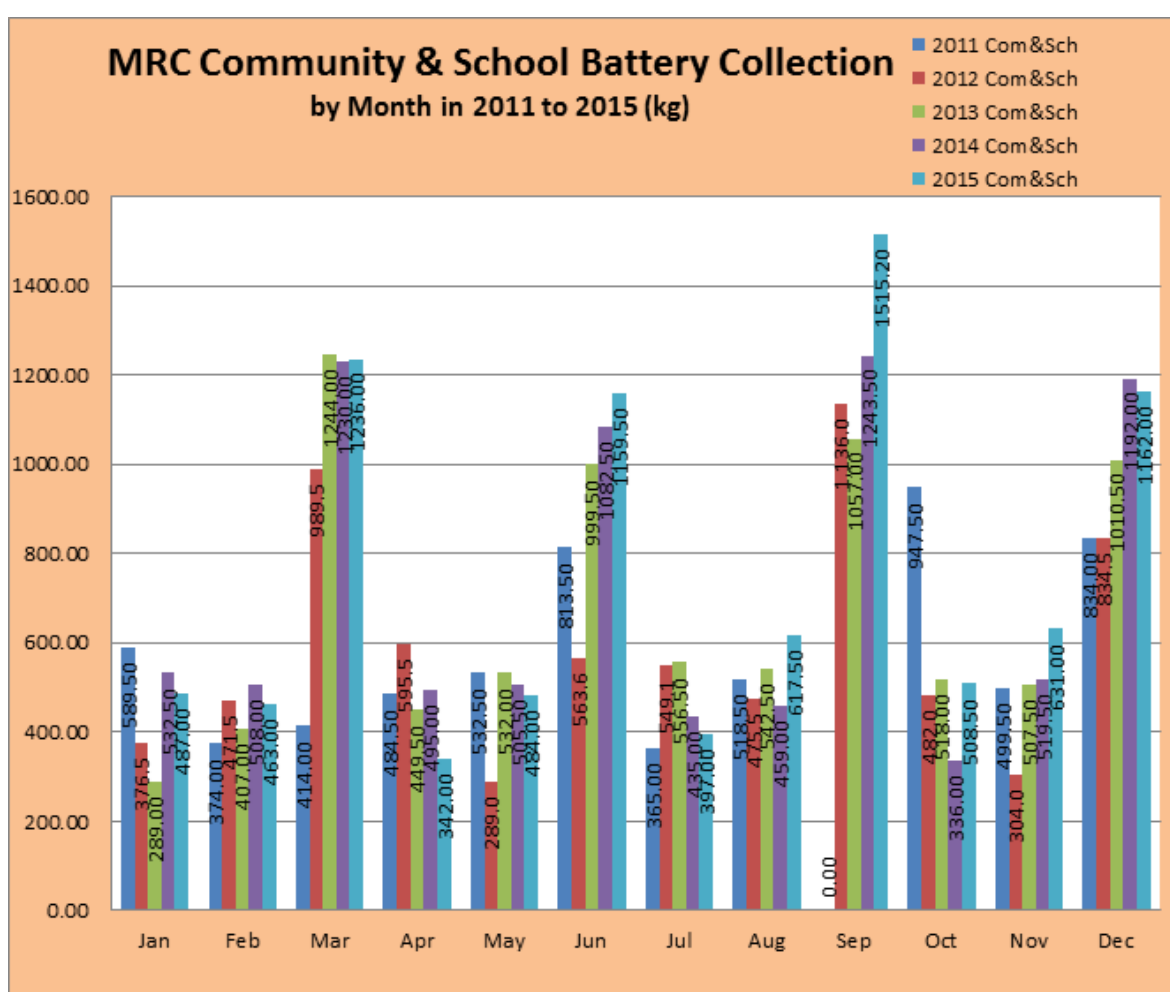
**Batteries Collected from Community Collection Bins by Council**  
**January - December 2015**  
**(Total No = 6248.7 kg)**



**MRC Community Battery Collection**  
**by Month in 2011 to 2015 (kg)**







The schools battery program continues to grow. The schools find it is a good way to engage students in a meaningful recycling program. From an MRC point of view it offers collection sites throughout the community and unlike the public battery collection bins the school ones are generally free of contamination. The battery program is particularly important to MRC operations in that batteries have shown themselves to be the cause of many of the landfill fires at Tamala Park and they are still a significant problem at the RRF—providing a source of metals contamination. This photo shows some of the fire causing batteries collected off the tipface.





MRC School Battery Program - League Table Total Batteries collected by Schools (kgs), Terms 1 - 4, 2015						
Ran k	Place	Term 1	Term 2	Term 3	Term 4	Grand Total
1	Sorrento Primary School	64	82	74	77	297
2	Duncraig Primary School	33	47	54	13	147
3	Halidon Primary School	16	37	22	62	137
4	Hillarys Primary School	32	11	44	32	119
5	Mullaloo Beach Primary School	31	32	34	13	110
6	Mercy College	4	0.5	66	34	104.5
7	Greenwood Primary School	20	32	17	35	104
8	Carramar Primary School	13	29	12	14	68
9	Highgate Primary School	8	2	38	17	65
10	St Marks Anglican Community School	22	11	18	10	61
11	Al-Hidayah Islamic School	-	-	44	15	59
12	Mount Hawthorn Primary School	7	14	14	15	50
13	Poynter Primary School	9	15	15	9	48
14	Ashdale Primary School	11	13	10	13	47
15	Pearsall Primary School	10	12	9	16	47
16	Goollellal Primary School	12	9	8	16	45
17	Madeley Primary School	11	4	18	12	45
18	North Wanneroo Primary School	7	5	16	17	45
19	Bold Park Community School	32	7	2	3	44
20	Marangaroo Primary School	-	-	37.5	2	39.5

### Cfl Program

The MRC in conjunction with the member councils also collects cfls and fluoro tubes from a number of community drop off points.

Fluoros are also a household hazardous waste and as such should not be disposed of in household waste or recycling bins.

The table below shows the collects made from the different councils this year.

2015	37	33.5	43	41	46	53	55.5	68.5	51	70.5	112.5	53.5	665
Cambridge	12	10	8	10	10	16	9	30	15	41	33.5	27.5	222
Joondalup	10	11	19	19	16	20	22	19	22	16	29	18	221
Perth	0	1	0				0						1
Vic Park	2	0.5	1.5	0.5	1	2	0	6	2	0.5	2		18
Vincent	13	11	12	11	14	13	22	12	11	12	45	4	180
Wanneroo			2.5	0.5	5	2	2.5	1.5	1	1	3	4	23

Nearly 2,000kg of cfls have been collected through this program over the last 4 years.

The community has responded well to these local community drop off points for these problematic waste which have also expanded to include mobile phones and ink cartridges.

The Town of Cambridge has rolled out a number of collection stations throughout its community. The one shown below is located in their Admin Office foyer.



The MRC in response to the need for a multi-purpose recycling station are upgrading the CFL recycling stations (below) to enable them to now accept not only CFL's but batteries, ink cartridges and mobile phones.



---

## E-Waste

The MRC has an e-waste contract that covers all of its member councils enabling free recycling of computers, TVs and other peripheral items that can be plugged into these devices. In addition to providing a permanent drop off site at Tamala Park this contract has enabled member councils to review the way they handle e-waste, for example, the City of Joondalup has banned e-waste from its verge collections through holding regular e-waste collection days throughout the year.

Tamala Park and Balcatta provided drop off options for residents during this period.

The next e-waste collection event is being planned for early February 2016 with there being collection sites in City of Joondalup and Town of Cambridge operating on the same weekend, providing drop off opportunities in both north and south of the region. Event weekends like this are being explored to gain maximum collection from Region wide promotion.

In recent times other service providers have either withdrawn their service or reduced the tonnages collected from councils for recycling, resulting in e-waste either being landfilled or councils having to pay for recycling themselves. The MRC and its member councils through its agreement with Infoactive have continued to have its e-waste picked up and recycled at no cost.

## WESSG

Waste Education Strategic Steering Group (WESSG) meetings are held at the end of each month. These continue to be an important forum for exchanging ideas and keeping everyone updated on happenings associated with waste within the Member Councils. The group has been invaluable in providing networking opportunity for its participants. People aren't confined to council boundaries so being aware of what is happening elsewhere is important in delivering messages to the community.

The importance of **Regional messaging** remains on the agenda as does the groups role in dealing with regional waste issues. Many events and activities within the Region occur regularly with a Regional calendar being developed to help streamline communications, messaging and coordination between both the MRC and the Member Councils and the Member Councils themselves. This to share the load and get best value for the Region, including looking at ways to improve waste diversion figures for the Region.

The **Waste Diversion Report Card** continues to be produced with quarterly information on how the MRC as a Region is tracking with regard to overall waste diversion. The report includes waste and recycling figures from each of the member councils. Member Councils are encouraged to report on activities where waste is diverted from landfill i.e. verge mattress and steel collections to ensure the diversion figures are as accurate as possible.

Whilst some councils are performing well others for a variety of reasons are not. In the July – September 2015 period not all member councils have provided their figures for this quarter so the diversion figure has not been calculated. However with the introduction of the City of Stirling's 3-bin system it is hoped that the figures would be an improvement on last quarter's 32%.

At the time of this report, the July – September 2015 and the Oct – December 2015 Waste Diversion Report had not yet been completed.

---

---

The **RRF issues** have remained in focus. This has included discussing the impact on waste deliveries during the composter replacement. With waste being diverted to Tamala Park landfill the regions waste diversion figure is again expected to dive.

The new composters however are now in place and other maintenance around the facility has taken place. The RRF recommenced operations late in November.



The MRC negotiated to have piece of the replaced composter placed at the Visitors Centre. This to give visitors a close up view of the size of the composters which they currently only see from a distance. This composter piece along with a screen segment from the also being replaced trommel unit will offer greater visual support in explaining the process.





The **'No glass' campaign**, to create behavioural change by residents to reduce the glass component in the compost, was rolled out into the participating councils, these being Cities of Joondalup, Vincent and Wanneroo and the Town of Victoria Park. These being chosen as they currently deliver the majority of waste received by the RRF.



The project uses a sticker placed on all the green lid bins and a flyer to explain why glass in the green lid bin is an issue. The sticker campaign was supported by advertising in newspapers and online via council websites and social media networks. Removing the glass from the green top bin having many potential benefits.

## NO GLASS in your GREEN top bin.

Put glass (whole or broken) in the **yellow top** recycling bin

The organic waste (kitchen scraps, paper, lawn clippings, leaves, prunings etc.) from your green top bin is used to make compost. It's really important to keep glass out of this bin.

**If there's glass in this bin, it can contaminate the compost.**

For more information contact Mindarie Regional Council. Call 9306 6303 or visit our website [www.mrc.wa.gov.au](http://www.mrc.wa.gov.au)



# NO GLASS IN YOUR GREEN TOP BIN

The Mindarie Regional Council (MRC) and its member councils, supported by the Waste Authority, are calling for its residents to NOT dispose of glass items, particularly bottles and jars, into their general household 'green top' bin. By doing this it will help improve the performance of the Resource Recovery Facility (RRF), where the waste from many of these bins is processed into a compost.

## WINNING BACK WASTE



This 'No Glass' initiative is expected to provide increases in:

- ✓ Recycling rate
- ✓ Households having their waste processed by the RRF
- ✓ Compost production
- ✓ Quality of compost
- ✓ Waste diverted from landfill
- ✓ Productivity by not having to process glass that is not compostable
- ✓ Financial benefits
- ✓ Environmental benefits



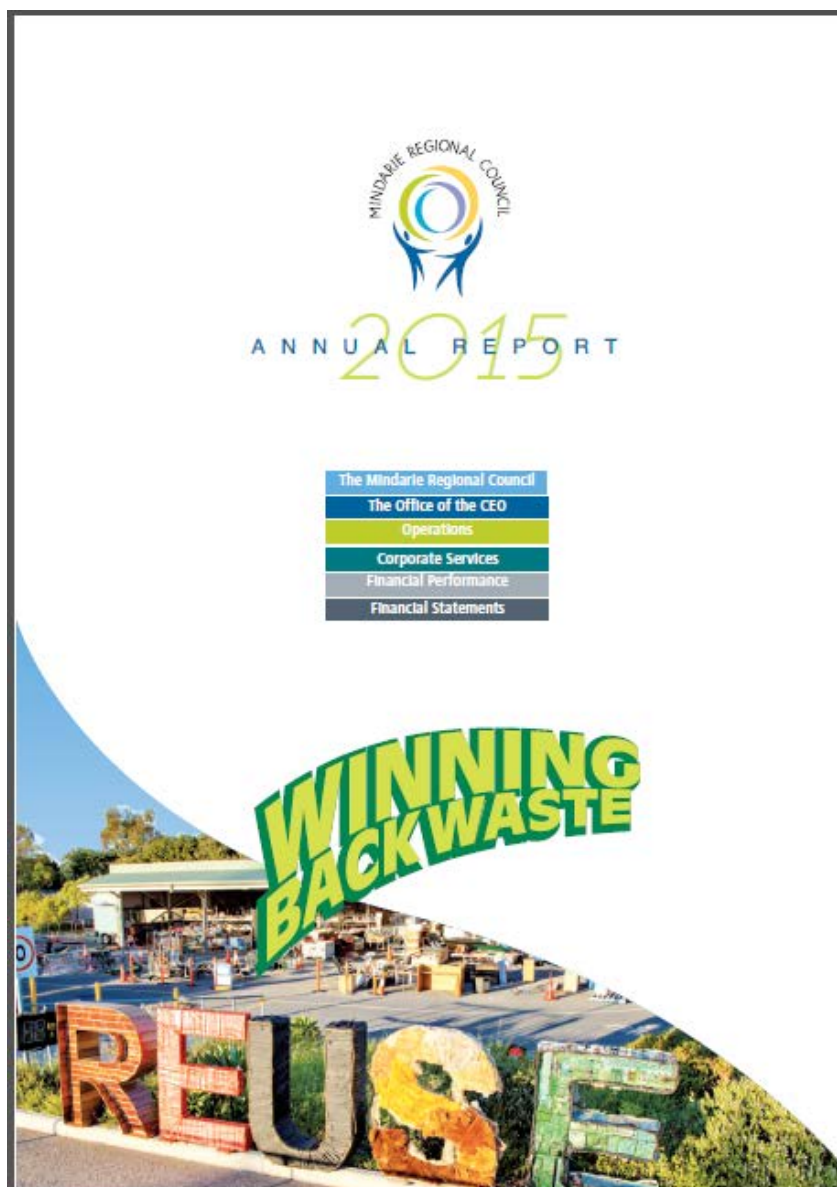
Reduce, Reuse,  
Recycle, and  
Dispose Wisely

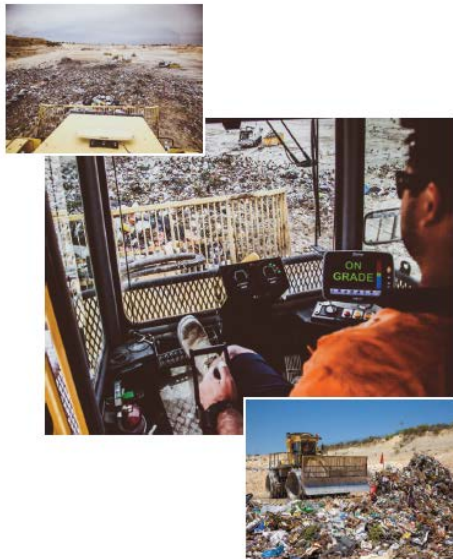


---

## Annual Report

During this period the 2015 Annual Report was produced. Apart from the yearly financials this document provides a snapshot of the MRC business and its activities throughout the 2014/2015 Financial Year. The Report can be viewed on the MRC website, [www.mrc.wa.gov.au](http://www.mrc.wa.gov.au)





### What is the Mindarie Regional Council?

The MRC is one of the State's largest waste management authorities. Formed in 1981 when the Cities of Perth, Stirling and Wanneroo purchased land in Perth's northern corridor that included a parcel of land deemed suitable for a landfill. The MRC was constituted in 1986.

The Tamala Park Regional Council was later formed to oversee the development of much of the originally purchased land, with the Cities leasing 157 hectares to the MRC to perform its activities of which 37 hectares are designated for use as landfill. The northern 170 hectare parcel of this land began being developed in 2012 as the 2,600 home housing estate 'Catalina'.

The MRC's primary role is for the managing and disposal of waste delivered to it by its member councils. These currently being: the Cities of Perth, Stirling, Joondalup, Vincent and Wanneroo and the Towns of Cambridge and Victoria Park.

The MRC comprises delegates from each of the member Local Governments on a basis of the acknowledged equity held within the landfill enterprise. This currently constitutes the following representation:

- City of Stirling – 4 delegates
- City of Joondalup – 2 delegates
- City of Wanneroo – 2 delegates
- City of Perth – 1 delegate
- City of Vincent – 1 delegate
- Town of Cambridge – 1 delegate
- Town of Victoria Park – 1 delegate

6

### What is the Mindarie Regional Council?

#### The Business

The 2014/2015 Financial Year data showed the total waste received by the MRC to be 372,360 tonnes from the following sources:

Source	Tonnes
Member Councils	296,026
Casuals	19,897
Residues	56,437
<b>Total</b>	<b>372,360</b>

The greater proportion of the residue section is waste from the RRF process and is effectively counted twice, once as untreated waste received at the RRF for processing and then again as processed residues entering Tamala Park.

The majority of this waste however still goes to landfill as shown below.

#### Waste goes to... (tonnes)

Destination	Tonnes
RRF	105,657
Landfill (member councils)	190,369
Landfill (casuals)	19,897
Landfill (residuals)	56,437
<b>Total</b>	<b>372,360</b>

**WINNING BACKWASTE**

8

### What is the Mindarie Regional Council?

#### The Business (cont.)

#### Finances

A summary of the MRC business from a financial perspective is shown below:

#### Revenue

Revenue by Source - 30 June 2015

Source	Revenue (\$m)
Members	\$43.7m
Non-members	\$3.3m
Other revenue	\$2.7m
<b>Total</b>	<b>\$49.7m</b>

#### Expenditure

Category	Expenditure (\$m)
RRF	\$23.6m
DER Landfill Levy	\$9.8m
Employee costs	\$4.6m
Amortisation	\$4.9m
Interest	\$1.1m
Other expenses	\$4.4m
<b>Total</b>	<b>\$48.4m</b>

9



---

<b>DOCUMENTS EXECUTED BY AFFIXING THE COMMON SEAL</b>	
<b>File No:</b>	<b>GOV/38</b>
<b>Appendix(s):</b>	<b>Nil</b>
<b>Date:</b>	<b>5 February 2016</b>
<b>Responsible Officer:</b>	<b>Chief Executive Officer</b>

During the period 26 September 2015 and 5 February 2016, one (1) document was executed by affixing the Common Seal. A summary is provided below:

<b>Date</b>	<b>Document</b>	<b>Signed/Sealed</b>
03/12/2015	Tender 13/129 – Community Greenwaste Recycling Joint Venture Soils Aint Soils	Sealed and signed by Chair and CEO
03/12/2015	Tender 13/129 – Cranewest (WA) Trading as Western Tree Recyclers	Sealed and signed by Chair and CEO
10/12/2015	Tender 13/131 – National Geotech	Sealed and signed by Chair and CEO

If further information is required on the documents signed under common seal please contact the Chief Executive Officer, Brian Callander on 9306 6302.

---